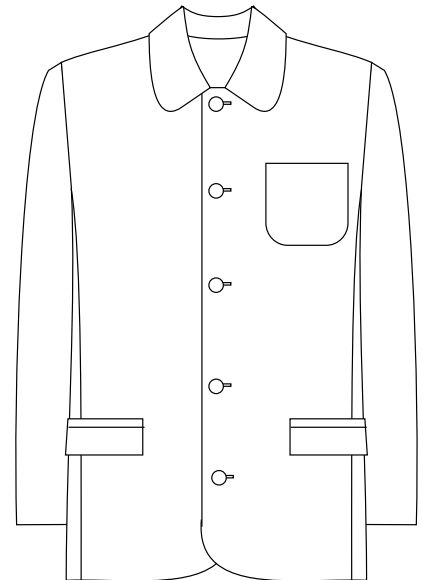
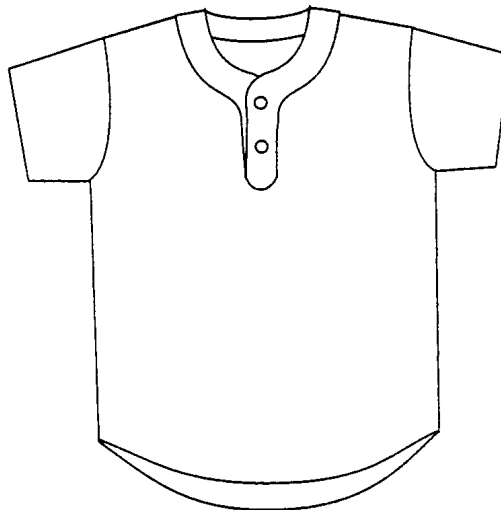
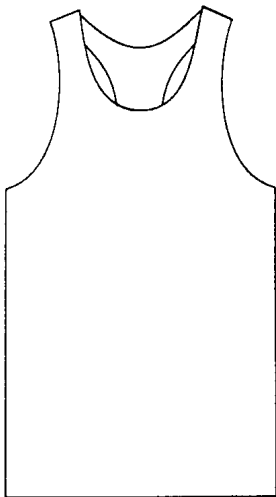
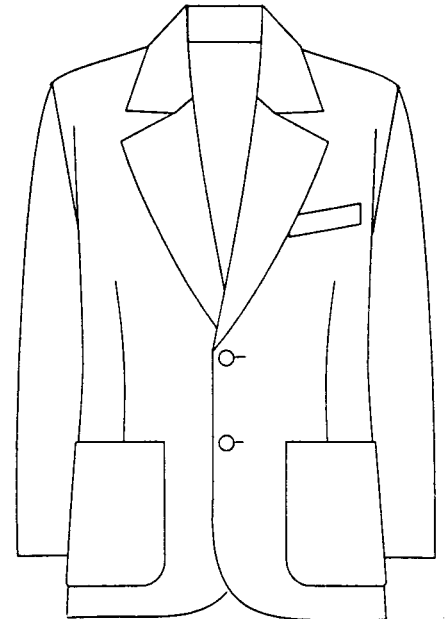
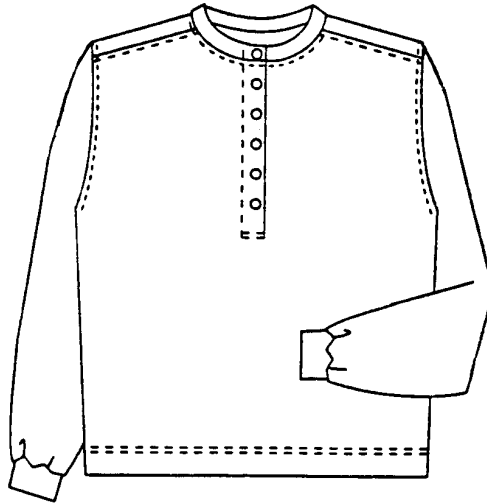
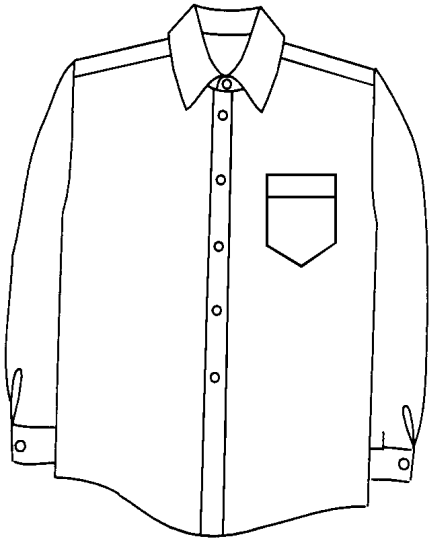
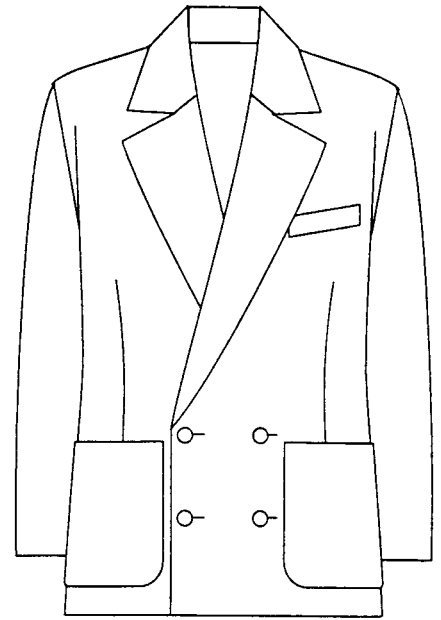
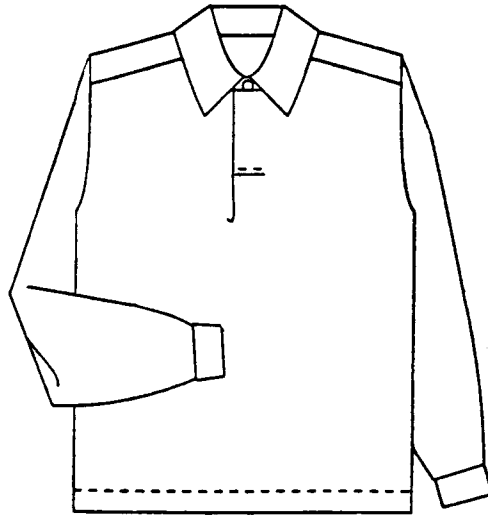


Conselle Interactive Exercise

Men's Top "Sort"

- Cut along the lines on the back side, creating cards.
- Sort cards into a continuum from Tailored Business to Untailored Casual.
- If in a class situation, look around and compare for agreement on difference in perception. Discuss.



Key:
Tailored Business

- 1.  5. 
- 2.  6. 
- 3.  7. 
- 4.  8. 

Untailored Casual
Art Source: SnapFashun Inc.

Source: Conselle Institute ©2000
Art Source: SnapFashun Inc.

Source: Conselle Institute ©2000
Art Source: SnapFashun Inc.

Source: Conselle Institute ©2000
Art Source: SnapFashun Inc.

Source: Conselle Institute ©2000
Art Source: SnapFashun Inc.

Source: Conselle Institute ©2000
Art Source: SnapFashun Inc.

Source: Conselle Institute ©2000
Art Source: SnapFashun Inc.

Source: Conselle Institute ©2000
Art Source: SnapFashun Inc.

Source: Conselle Institute ©2000
Art Source: SnapFashun Inc.